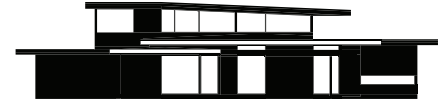


Axiom 2650

2,650 sf / 81' x 65' footprint



617.868.1867
info@turkeldesign.com
www.turkeldesign.com

Axiom
by Turkel Design

Axiom 2650

About



Designed for a variety of building site types, this home can slip just as easily into a suburban lot as it will rest on a wider site with multiple viewing directions.

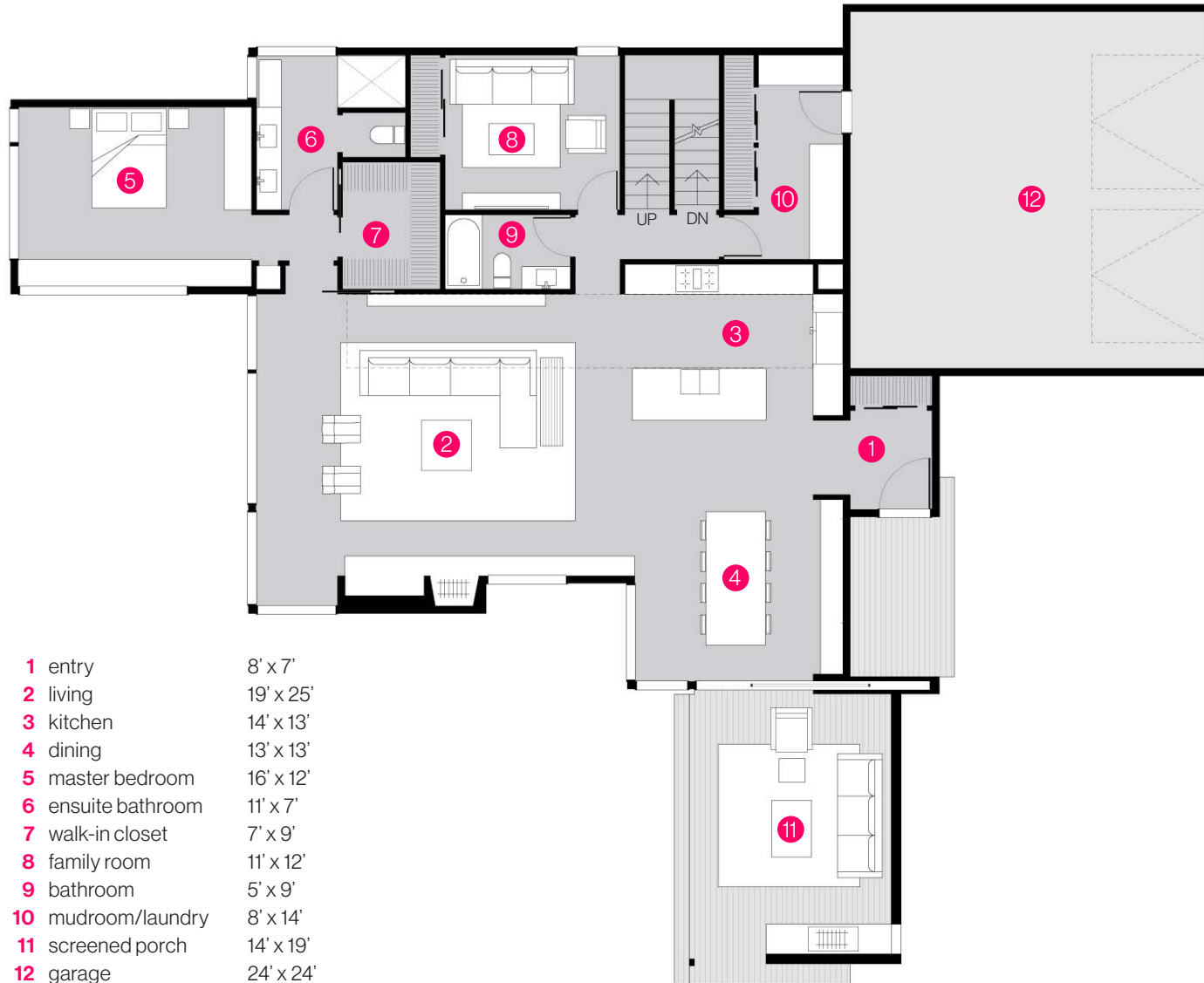
A linear light well fills the kitchen and living area with natural light while providing a wonderful solution for accessing light and views on sites that have a variety of exposures.

617.868.1867
info@turkeldesign.com
www.turkeldesign.com

Axiom
by Turkel Design

Axiom 2650

Main Level Plan / 1,880 sf



- 1 entry 8' x 7'
- 2 living 19' x 25'
- 3 kitchen 14' x 13'
- 4 dining 13' x 13'
- 5 master bedroom 16' x 12'
- 6 ensuite bathroom 11' x 7'
- 7 walk-in closet 7' x 9'
- 8 family room 11' x 12'
- 9 bathroom 5' x 9'
- 10 mudroom/laundry 8' x 14'
- 11 screened porch 14' x 19'
- 12 garage 24' x 24'

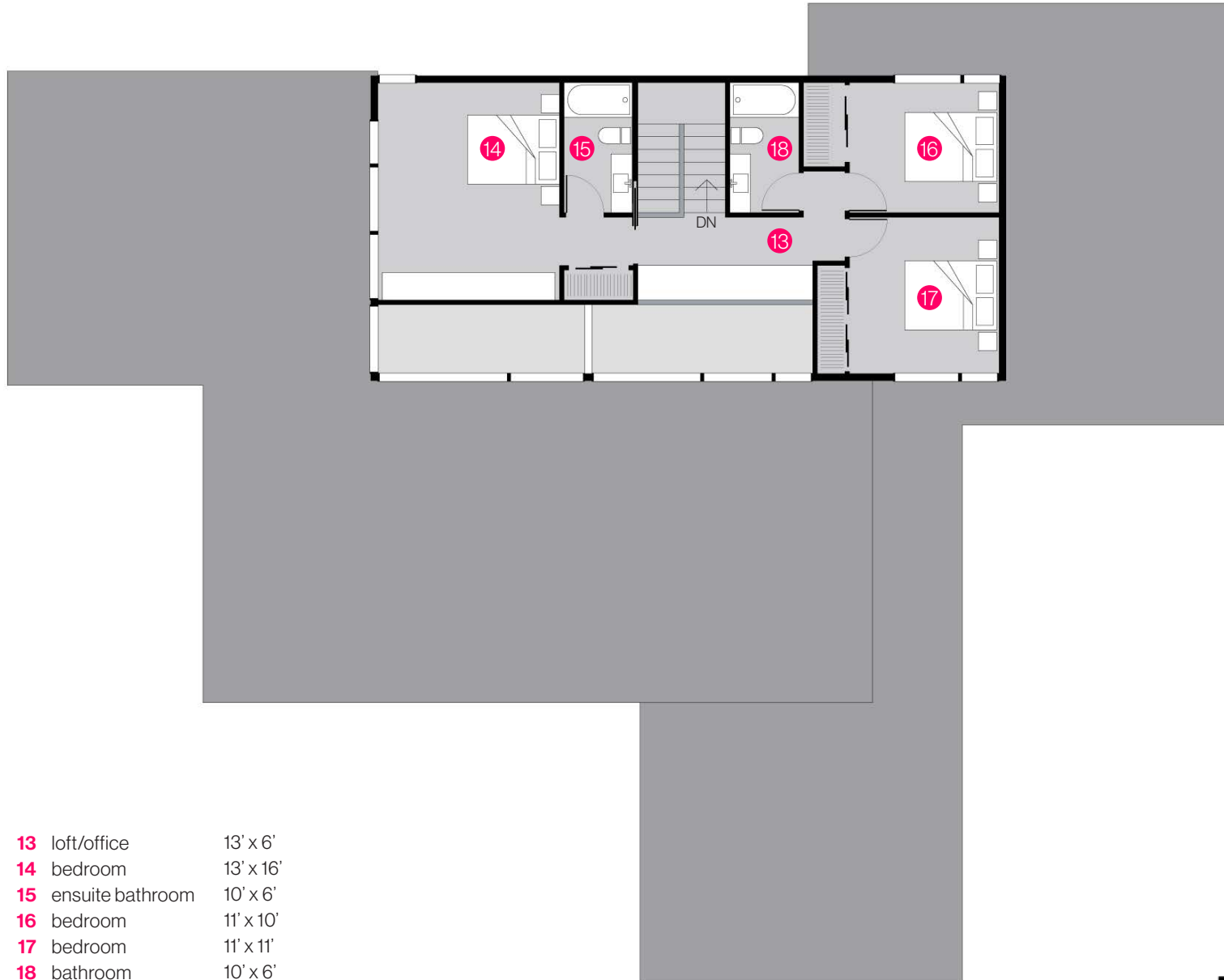


617.868.1867
info@turkeldesign.com
www.turkeldesign.com

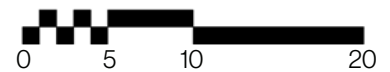
Axiom
by Turkel Design

Axiom 2650

Upper Level Plan / 770 sf



- 13** loft/office 13' x 6'
- 14** bedroom 13' x 16'
- 15** ensuite bathroom 10' x 6'
- 16** bedroom 11' x 10'
- 17** bedroom 11' x 11'
- 18** bathroom 10' x 6'



617.868.1867
info@turkeldesign.com
www.turkeldesign.com

Axiom
by Turkel Design

Axiom 2650

Interior View



617.868.1867
info@turkeldesign.com
www.turkeldesign.com

Axiom
by Turkel Design