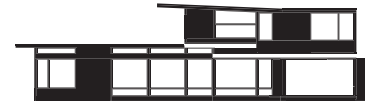


Axiom 2450

2,450 sf / 65' x 71' footprint



617.868.1867
info@turkeldesign.com
www.turkeldesign.com

Axiom
by Turkel Design

Axiom 2450

About



Designed for a hillside site or lakefront property, this modest, efficiently designed home allows multiple spaces to share in primary views.

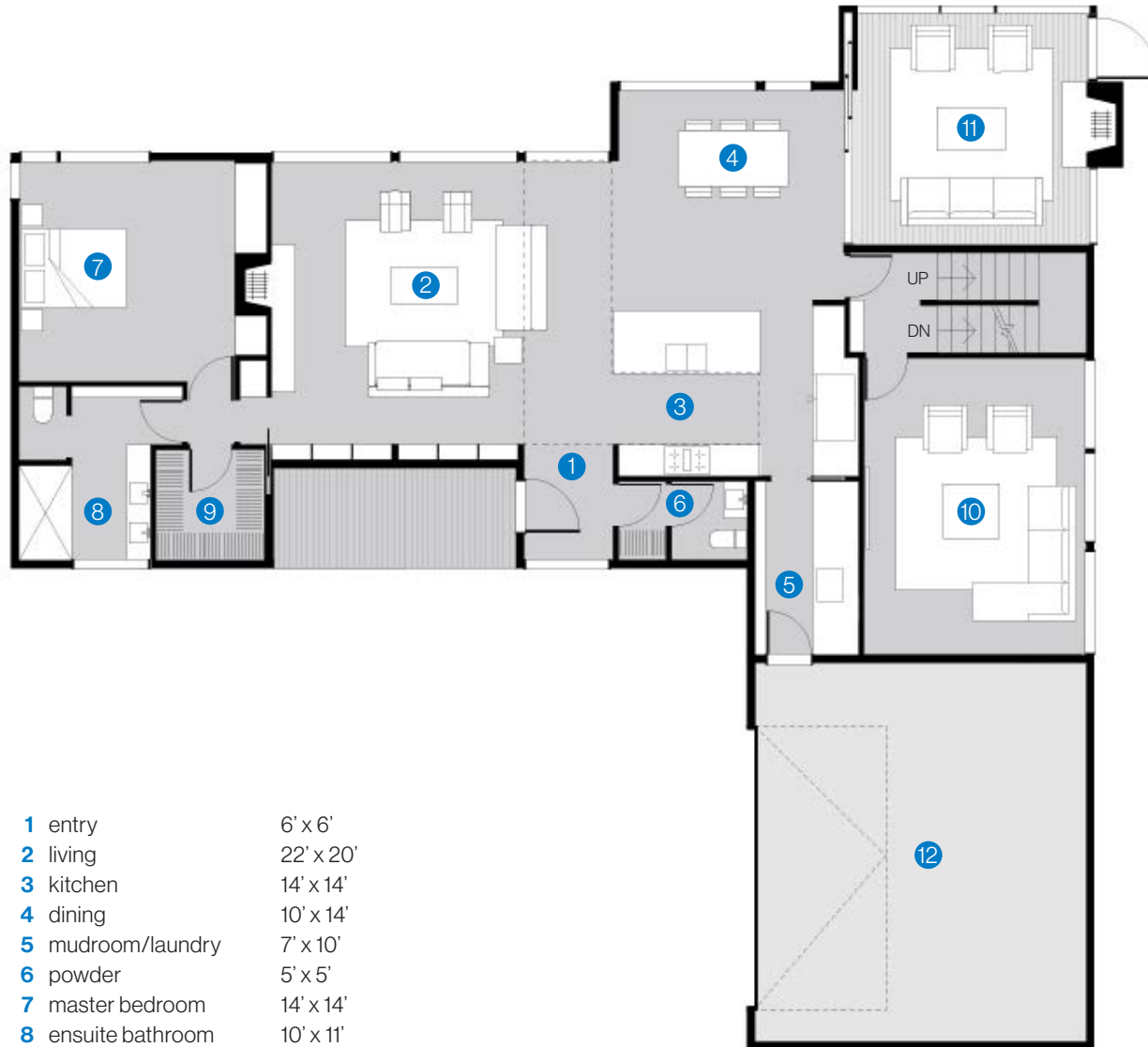
A deep covered porch allows for ample sheltered outdoor living while the screened porch, accessible through a 12 foot retractable wall of glass, allows for seamless flow from dining area to screened sitting area. The living, kitchen and dining areas share in a double height clerestory that fills the center of the home with natural light via the loft above.

617.868.1867
info@turkeldesign.com
www.turkeldesign.com

Axiom
by Turkel Design

Axiom 2450

Main Level Plan / 1,790 sf



- | | | |
|----|------------------|-----------|
| 1 | entry | 6' x 6' |
| 2 | living | 22' x 20' |
| 3 | kitchen | 14' x 14' |
| 4 | dining | 10' x 14' |
| 5 | mudroom/laundry | 7' x 10' |
| 6 | powder | 5' x 5' |
| 7 | master bedroom | 14' x 14' |
| 8 | ensuite bathroom | 10' x 11' |
| 9 | walk-in closet | 7' x 7' |
| 10 | family room | 14' x 17' |
| 11 | screened porch | 15' x 15' |
| 12 | garage | 22' x 24' |

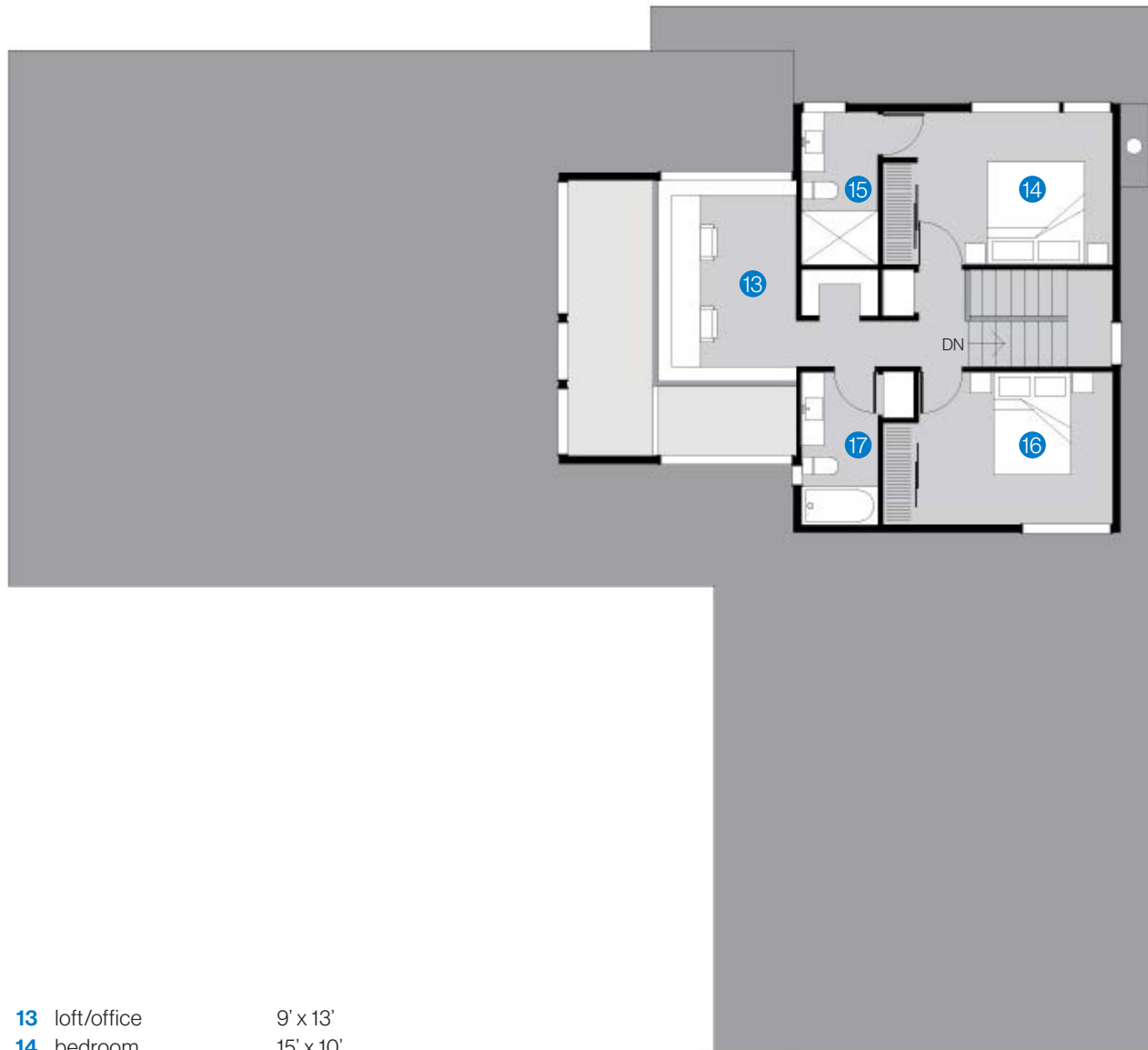


617.868.1867
info@turkeldesign.com
www.turkeldesign.com

Axiom
by Turkel Design

Axiom 2450

Upper Level Plan / 660 sf



- | | | |
|-----------|------------------|-----------|
| 13 | loft/office | 9' x 13' |
| 14 | bedroom | 15' x 10' |
| 15 | ensuite bathroom | 5' x 10' |
| 16 | bedroom | 13' x 10' |
| 17 | bathroom | 5' x 10' |



617.868.1867
info@turkeldesign.com
www.turkeldesign.com

Axiom
by Turkel Design

Axiom 2450

Interior View



617.868.1867
info@turkeldesign.com
www.turkeldesign.com

Axiom
by Turkel Design