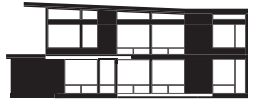


Axiom 2390

2,390 sf / 55' x 51' footprint



617.868.1867
info@turkeldesign.com
www.turkeldesign.com

Axiom
by Turkel Design

Axiom 2390

About



A compact home that lives large. With the possibility of 5 bedrooms, this 55-foot wide home belongs as much in an established city neighborhood as it does in a lakeside community.

Kitchen and dining areas open to the 2 storey great room, which extends up to the loft office and gallery space above – providing expansive views within the home and beyond.

617.868.1867
info@turkeldesign.com
www.turkeldesign.com

Axiom
by Turkel Design

Axiom 2390

Main Level Plan / 1,430 sf



- | | | | | | |
|---|-----------------|-----------|---|-------------|-----------|
| 1 | entry | 7' x 7' | 6 | family room | 15' x 14' |
| 2 | living | 18' x 15' | 7 | bathroom | 5' x 8' |
| 3 | kitchen | 14' x 18' | 8 | bedroom | 12' x 12' |
| 4 | dining | 14' x 8' | 9 | garage | 22' x 24' |
| 5 | mudroom/laundry | 8' x 10' | | | |



617.868.1867
info@turkeldesign.com
www.turkeldesign.com

Axiom
by Turkel Design

Axiom 2390

Upper Level Plan / 960 sf



- | | | | |
|----------------------------|-----------|--------------------------|-----------|
| 10 loft/office | 12' x 14' | 13 walk-in closet | 11' x 8' |
| 11 master bedroom | 11' x 18' | 14 bedroom | 11' x 13' |
| 12 ensuite bathroom | 8' x 11' | 15 bathroom | 5' x 10' |



617.868.1867
info@turkeldesign.com
www.turkeldesign.com

Axiom
by Turkel Design

Axiom 2390

Interior View



617.868.1867
info@turkeldesign.com
www.turkeldesign.com

Axiom
by Turkel Design